

# First Floor: The Madeline & Alan Blinder

## ADAPT Center, Activity Hall &

## Ability Garden Indoor/Outdoor Classroom

One of JARC's unique programs is ADAPT – Adults with Disabilities Aging in Place Together. ADAPT currently works with clients from ages 55 to 84, keeping them engaged in socially and cognitively appropriate activities. Due to space constraints, JARC can only accommodate 25 adults. The demand for service is much higher.

The first floor, The ADAPT Center, ADAPT Activity Hall and Ability Garden Indoor Outdoor Classroom will provide indoor and outdoor dedicated space for seniors with special needs to gather for meaningful daily activities, including social and therapeutic experiences in a dignified, purposeful setting. This additional space would allow JARC to increase the number of seniors they currently serve.



### ADAPT Activity Hall

- Kitchen area
- Space for instructors
- 75" wall mounted TV
- Storage area
- Restrooms: 2 single ADA compliant
- Therapeutic space

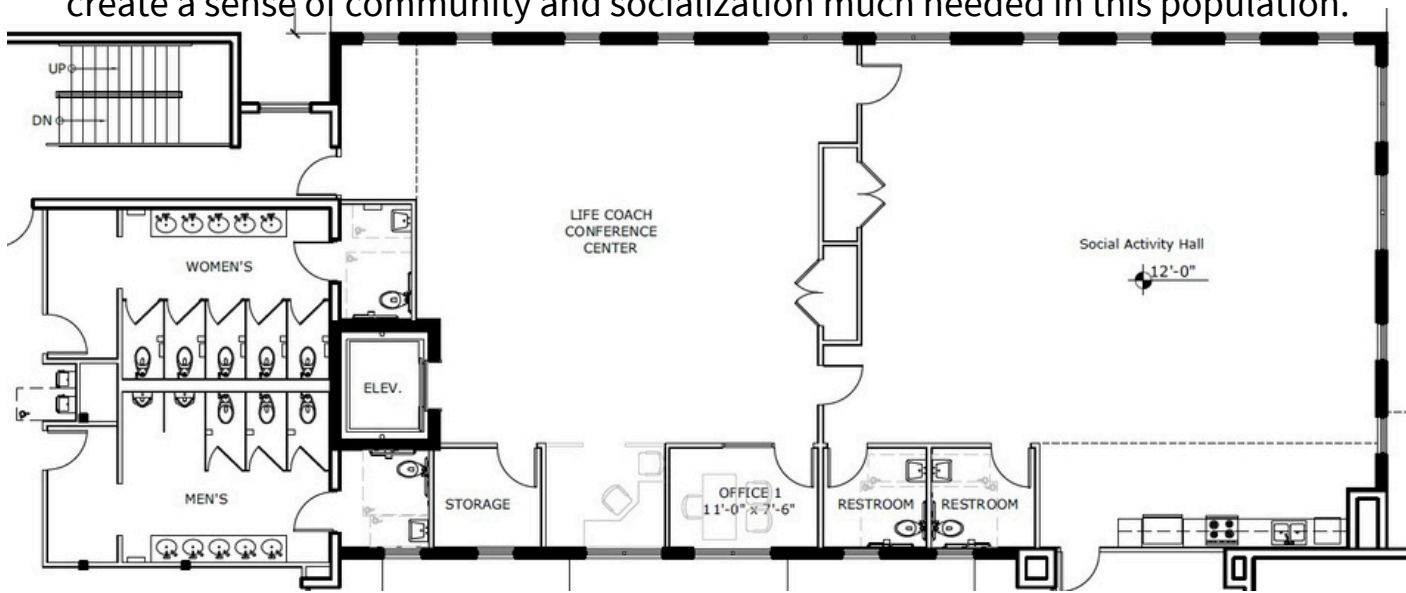
### Indoor/Outdoor Garden Classroom

- Small office & storage space
- Accordion style glass doors on South side leading out to garden
- West wall large windows

# Second Floor: The Lynne & Howard Halpern Supported Living Center

Have you ever felt like you have fallen between the cracks? That is where individuals with mild intellectual disabilities often find themselves. They are independent enough that they do not need the 24-hour supervision of a group home, but not independent enough to live on their own. They need something in the middle. That is what JARC's Supported Living Apartments provide. A place where they can be independent but also receive the support needed to ensure their success.

The Supported Living Center is designed to provide the support team to assist with independent engagement in the community including meal preparation, financial management, employment, and medical assistance. The new social activity hall will facilitate opportunities to interact socially, allow program ideas to flourish and create a sense of community and socialization much needed in this population.



## Social Activity Hall

- Kitchen area
- Restrooms: 2 single ADA compliant
- 75" wall mounted TV: couches to complete the area

## Supported Living Coach Conference Center

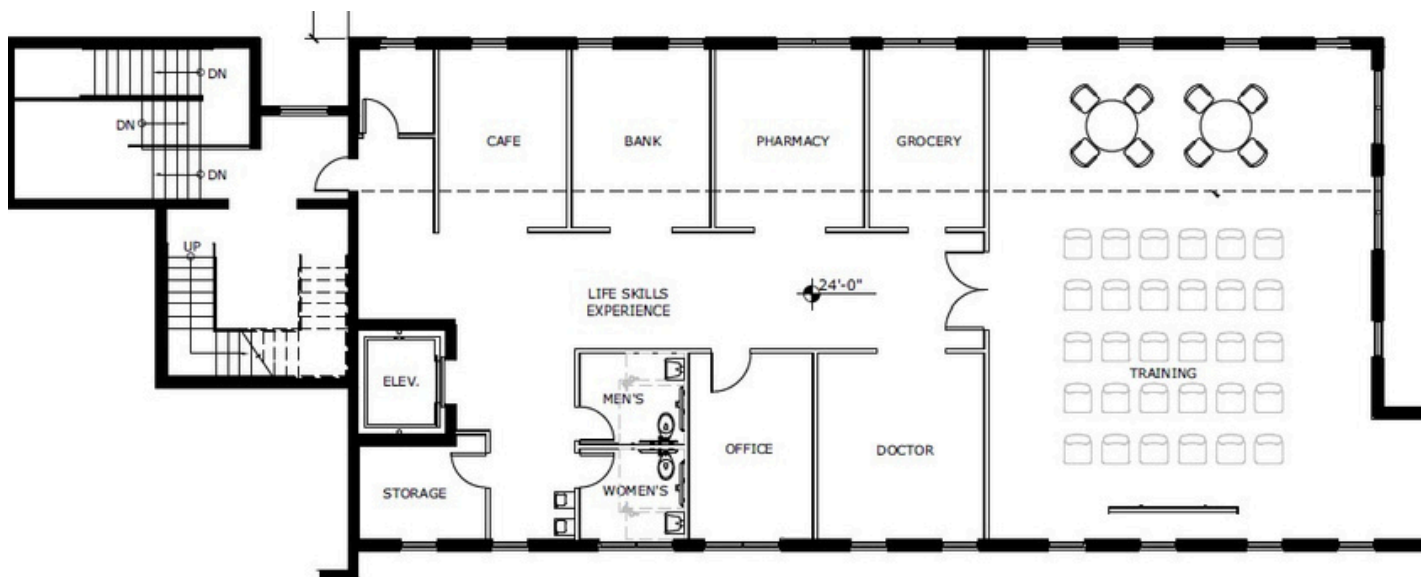
- Manager's office
- 6 cubicles
- Centralized meeting area
- Storage room

# Third Floor: Platnick Family Transition Center

Those with special needs in the 18-22 age group face additional challenges. This is a transition period from the public school system into adulthood. Only 13% of students with disabilities transition to post-secondary education, so what happens to the other 87%? Unfortunately, there is a lack of supportive community training options.

JARC plans to dedicate an entire floor of their new addition to provide just such training. Modeled after the Friendship Circle of Bloomfield Hills, Michigan's Weinberg Village, JARC plans to build a true-to-life cityscape, where lessons for life can be taught to young adults with disabilities. The In Memory of Paul Markhoff MAINSTREET Experience will provide these lessons and fill the gap between classroom learning and real-world experiences by teaching life-skills and giving the opportunity to confidently assume responsibility and independence in the outside world, along with job skill training.

Not only will MAINSTREET provide a wonderful learning experience for young adults with special needs, it will also be utilized by all the schools housed on the Federation's campus: Zale Preschool, Katz Hillel Day School and Donna Klein Jewish Academy. These students would not only learn practical skills but would learn valuable lessons of inclusion as well. This collaboration is consistent with the communal atmosphere encouraged by the Jewish Federation of South Palm Beach County.



## MainStreet Experience

- 6 Store Front Booths
- Restrooms: 2 single ADA compliant

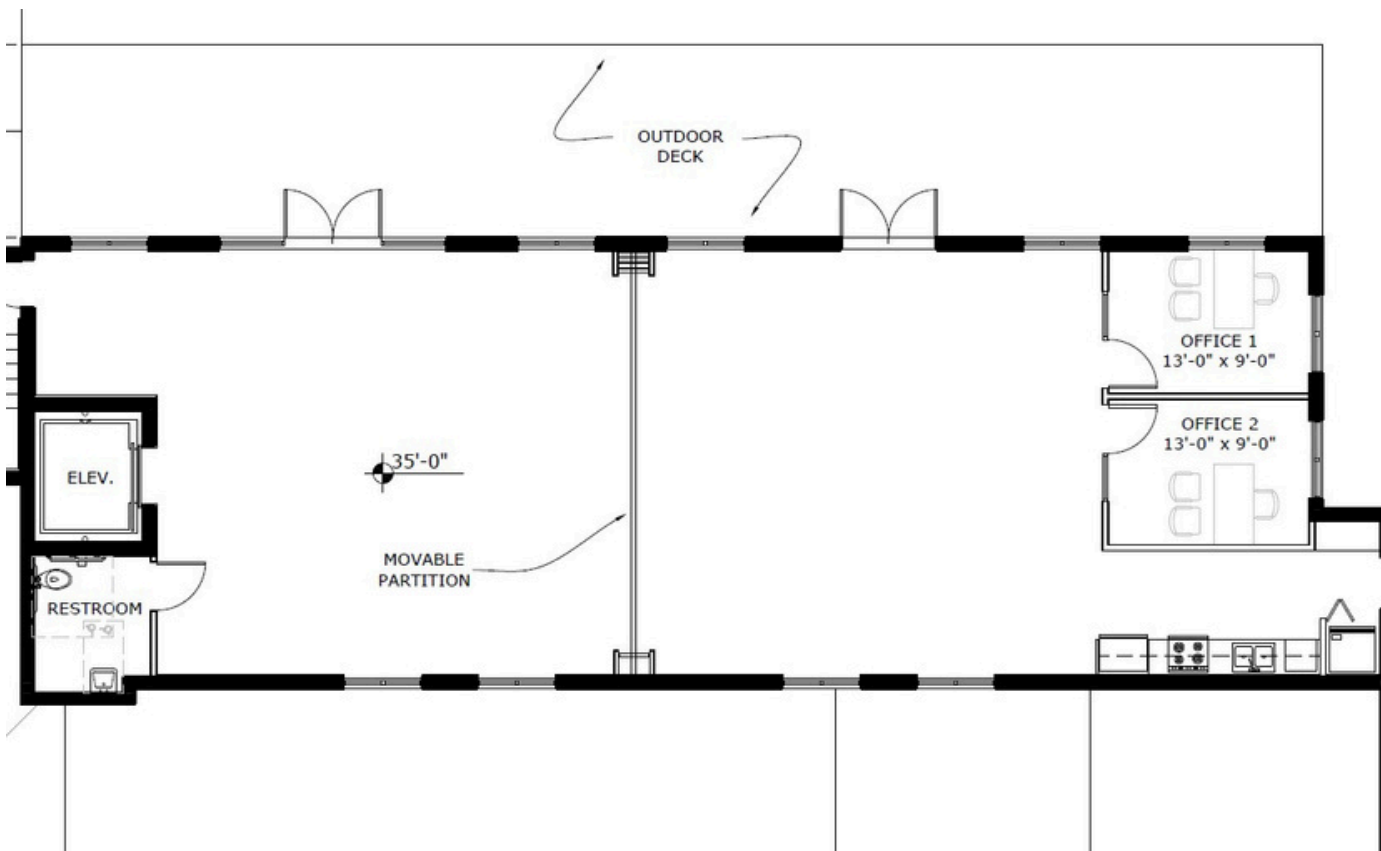
## Theater Training

- 25 Seats
- Concession Stand

# Fourth Floor: The Marcus Foundation Enrichment & Training Center

In order to expand life engagement opportunities designed to assist the communities underserved population, we need to provide support in addition to work skills development and training. This would include services for individuals who require enhanced supervision not currently available.

Areas of focus are flexible space to adapt to the changing needs, manufacturing and essential social skills development.



## Training Center

- Open multi use adaptable space
- 2 conference rooms
- Moveable walls
- Outdoor patio
- Kitchen
- ADA compliant restroom